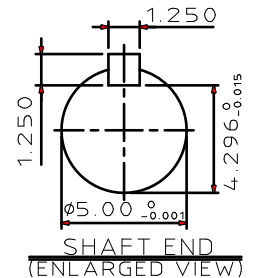
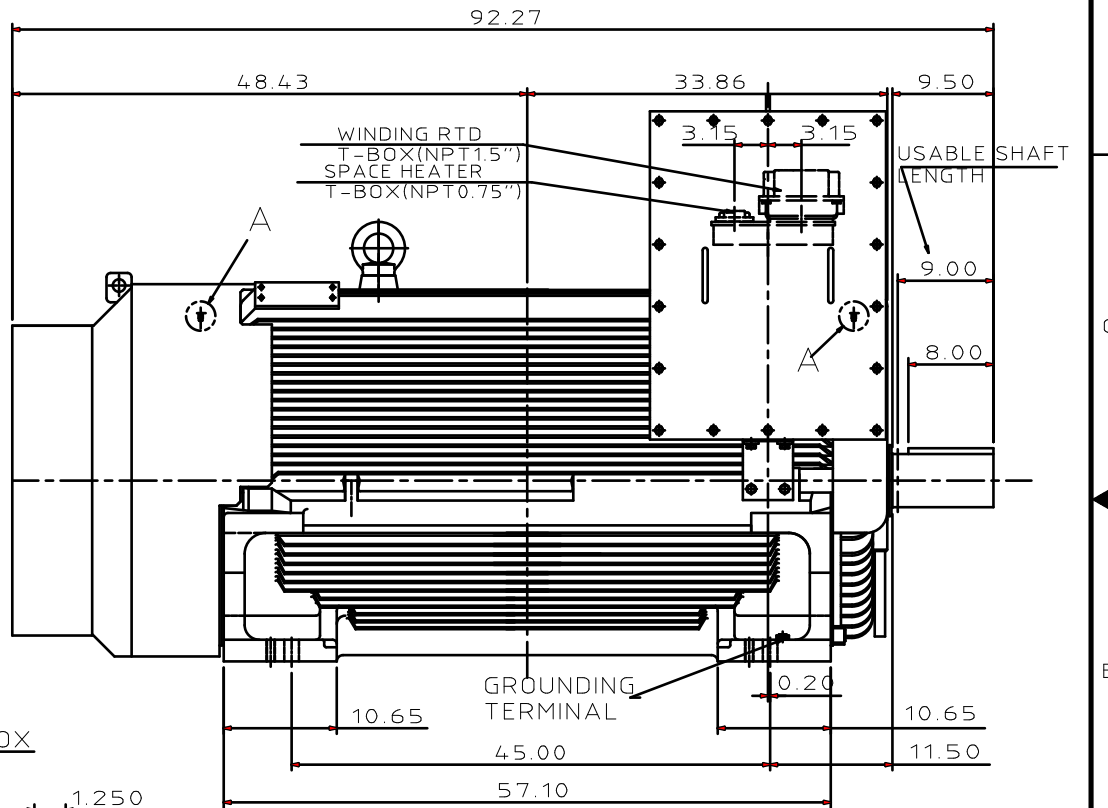
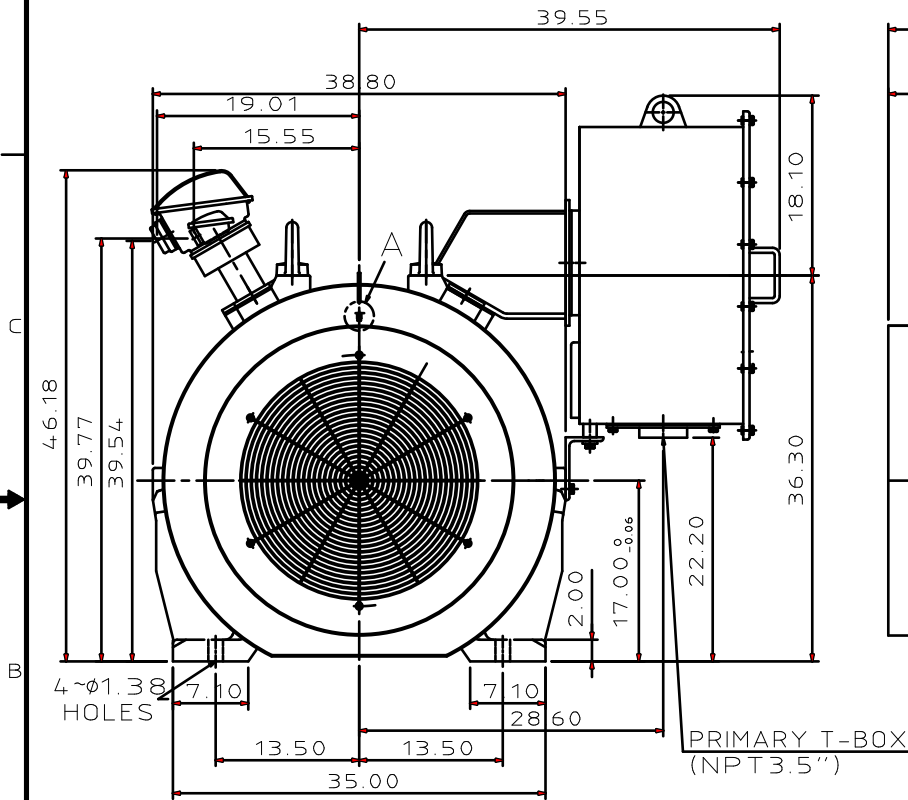


DETAIL A

PROVISION FOR VIBRATION DETECTORS

| TYPE | OUTPUT | | POLE | TIME RATING | VOLTAGE V | Hz | SYN.SPEED R.P.M |
|--------|--------|-------|------|-------------|-----------|----|-----------------|
| | HP. | kW. | | | | | |
| AFHGTK | 900 | 671.1 | 8 | CONT. | 2300 | 60 | 900 |

TOTALLY ENCLOSED FAN-COOLED TYPE. SQUIRREL-CAGE ROTOR.



NOTE:

1. DIMENSIONS IN inch
2. FRAME NO. 6810B
3. F CLASS INSULATION, S.F. 1.15
4. FOR DIRECT FLEXIBLE COUPLING
5. ENCLOSURE: IP54
6. BEARING SIZE: DRIVE-END 6326C3
OPP. DRIVE-END 6322C3
7. WITH WINDING RTD: PT 100Ω/0°C 6PCS
8. WITH SPACE HEATER: 10 120V
9. PROVISION FOR BEARING RTD MOUNTING: 2-PT 1/2" TAPS PER BRACKET
10. CLASS I, DIV. 2, GROUP B,C&D, T3
CLASS I, DIV. 2, GROUP F&G

11. NON-SPARKING FAN
12. CORROSION PROOF
13. NOISE: BELOW 85dBA (TOLERANCE 3dBA) AT 1 METER DISTANCE NO LOAD
14. APPROX. WEIGHT: 12665 lb

| | | | |
|-------|-------------|-------------------------|----------------|
| DATE | DEC 08 2016 | OUTLINE DIMENSIONS | |
| | KF9008 | 3-PHASE INDUCTION MOTOR | |
| DWN. | J.HSIAO | SEP 16 2015 | DWG NO. REV.00 |
| CHKD. | C.SHIH | SEP 17 2015 | 4B040L949 |
| APPD. | C.LIU | SEP 17 2015 | |

